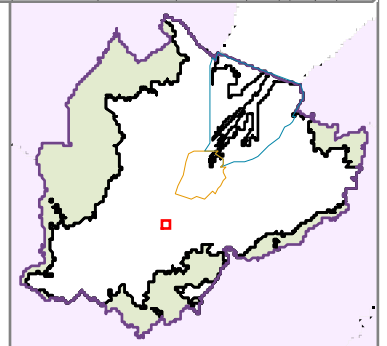


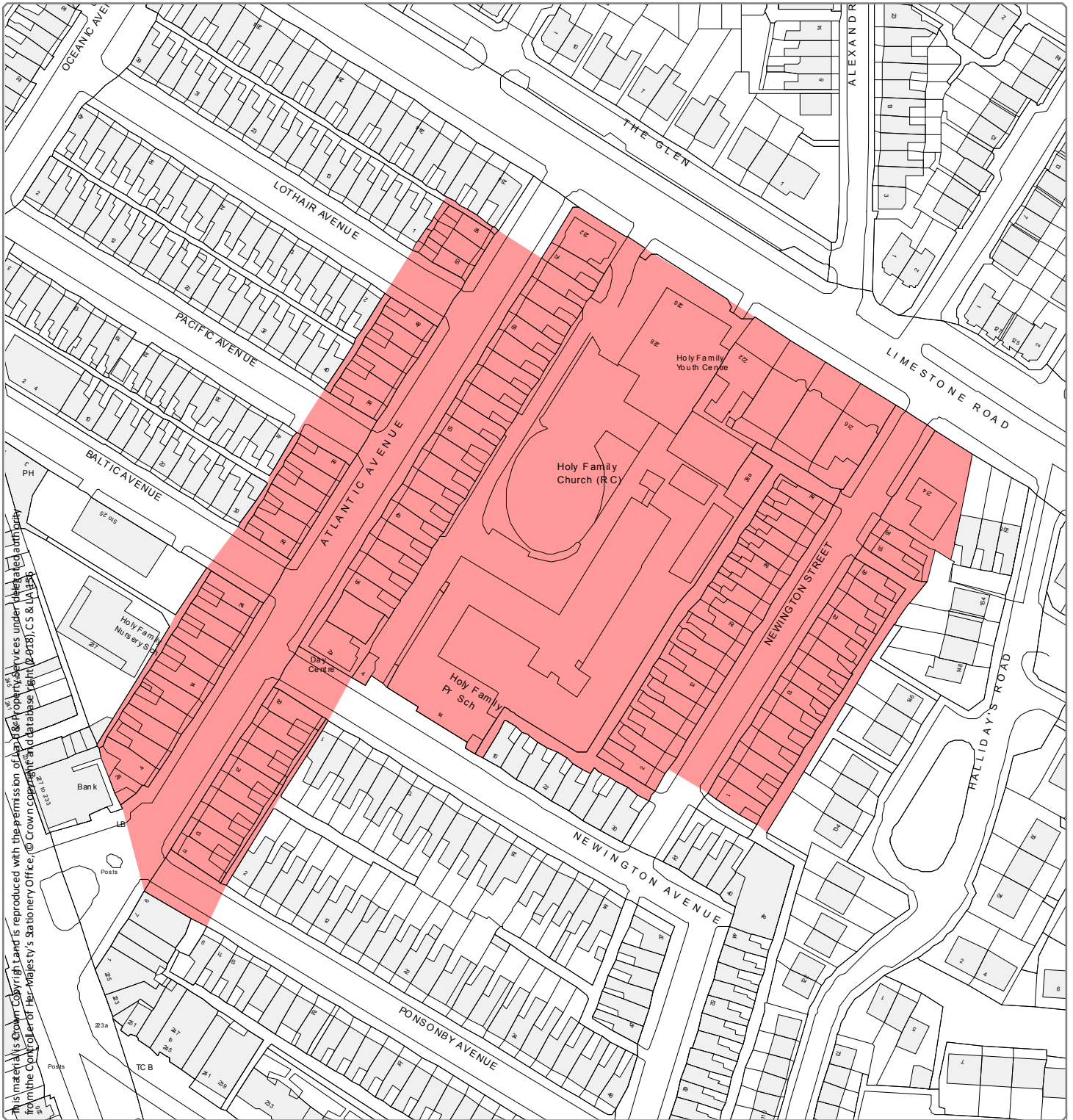
This material is Crown Copyright and is reproduced with the permission of Land & Property Services under delegated authority from the Controller of Her Majesty's Stationery Office, © Crown copyright and database right, © 018, CS & LA 156

**Designation Ref:** HMO 2/01  
**Location:** ADELAIDE



Source: Draft Belfast Metropolitan Area Plan 2015 in its most advanced stage prior to formal adoption  
Note: Only the above Designation Ref is shown on this map

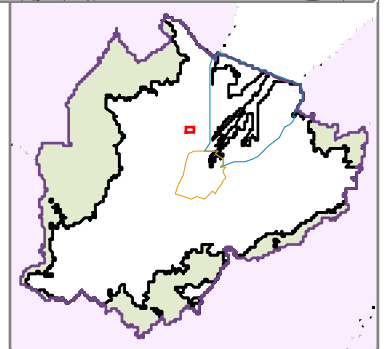
Scale 1:2,000

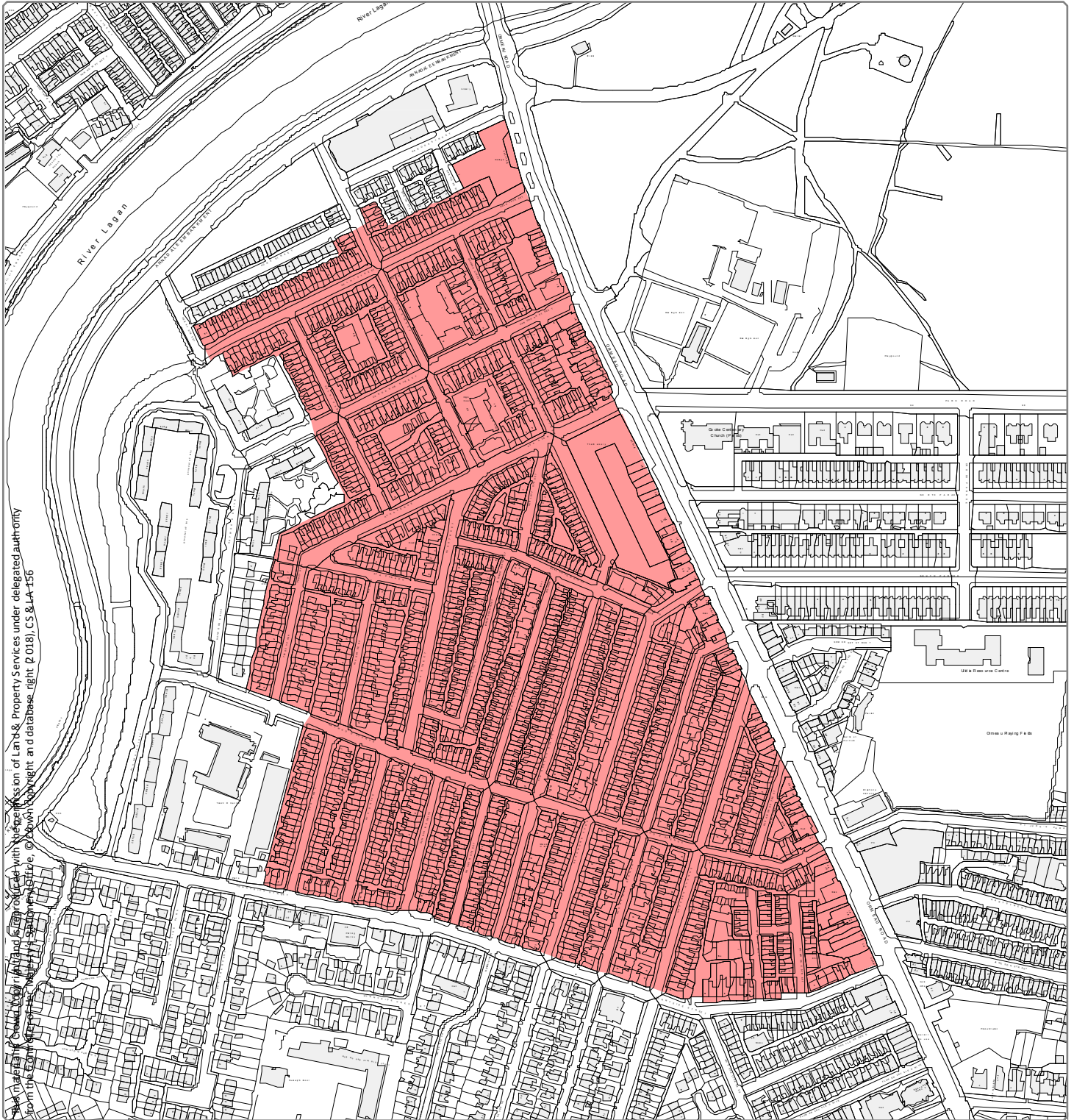


**Designation Ref:** HMO 2/02  
**Location:** ATLANTIC

Source: Draft Belfast Metropolitan Area Plan 2015 in its most advanced stage prior to formal adoption  
 Note: Only the above Designation Ref is shown on this map

Scale 1:1,500



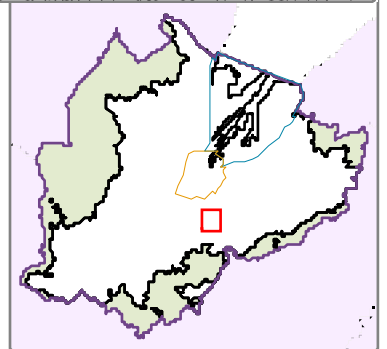


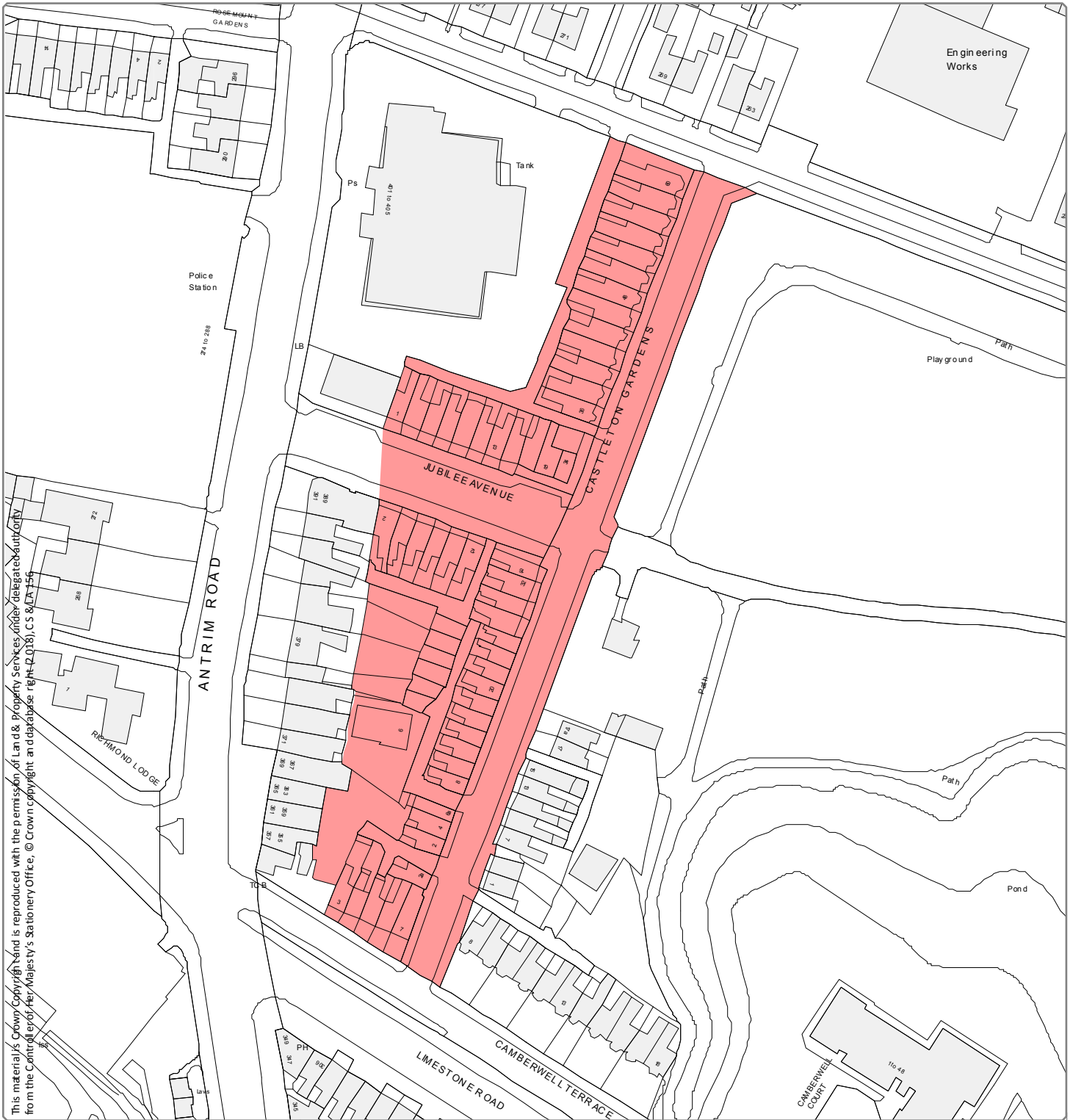
Map made by Belfast City Council in accordance with the permission of Land & Property Services under delegated authority from the Council. All rights reserved. © Belfast City Council, 2018. All rights reserved. CS & LA 156

**Designation Ref:** HMO 2/03  
**Location:** BALLYNAFEIGH

Source: Draft Belfast Metropolitan Area Plan 2015 in its most advanced stage prior to formal adoption  
 Note: Only the above Designation Ref is shown on this map

Scale 1:4,500

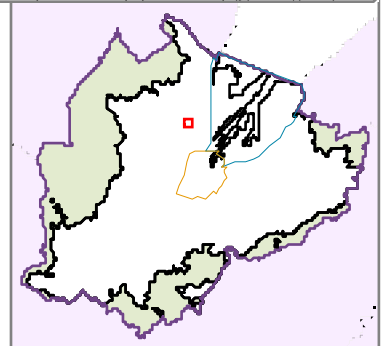


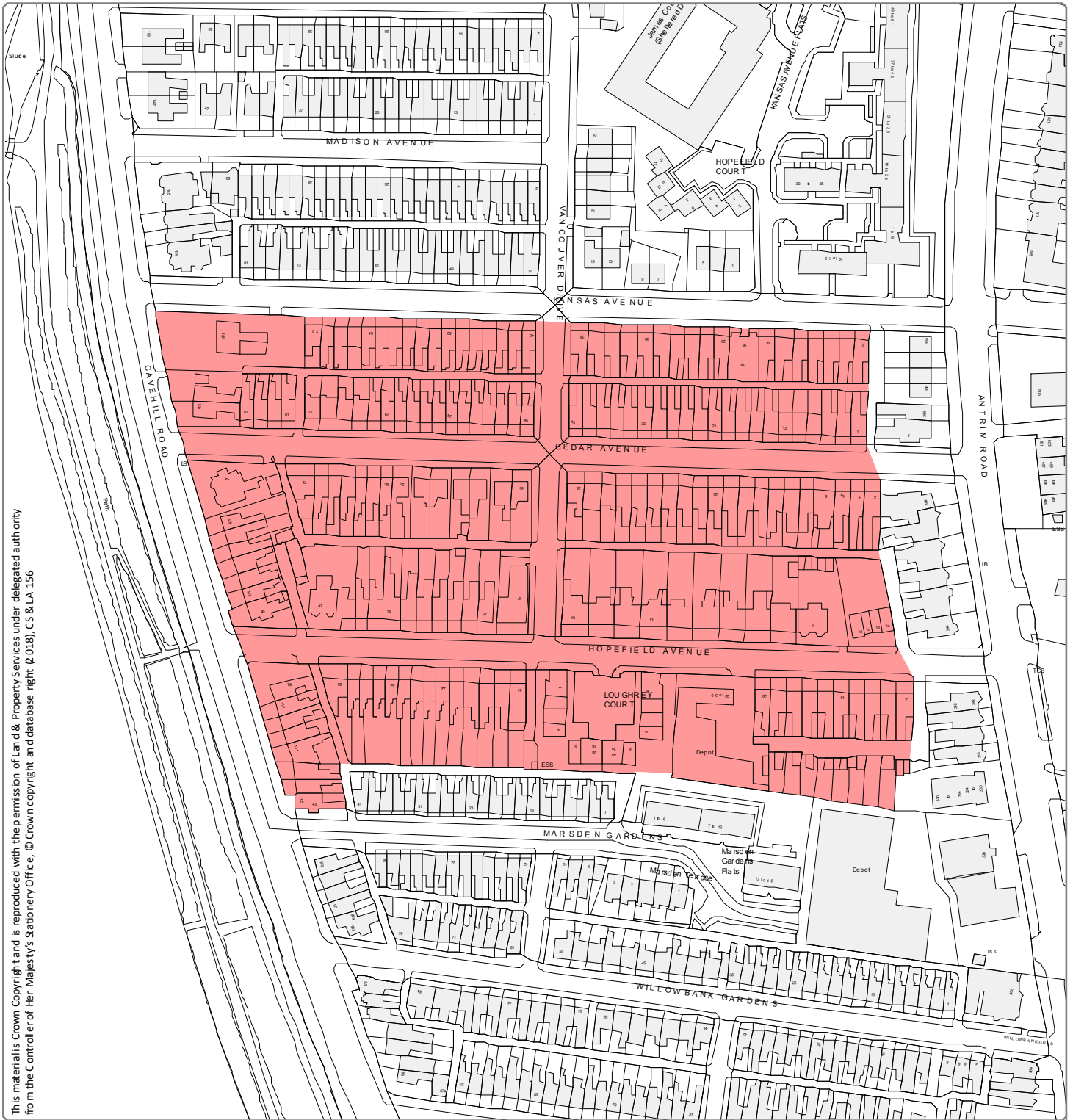


**Designation Ref:** HMO 2/04  
**Location:** CASTLETON

Source: Draft Belfast Metropolitan Area Plan 2015 in its most advanced stage prior to formal adoption  
 Note: Only the above Designation Ref is shown on this map

Scale 1:1,500




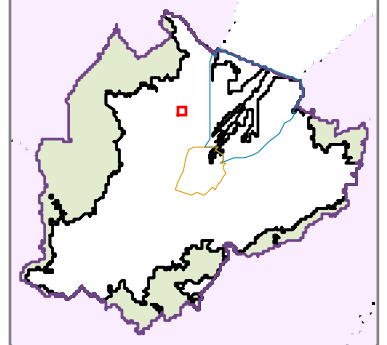


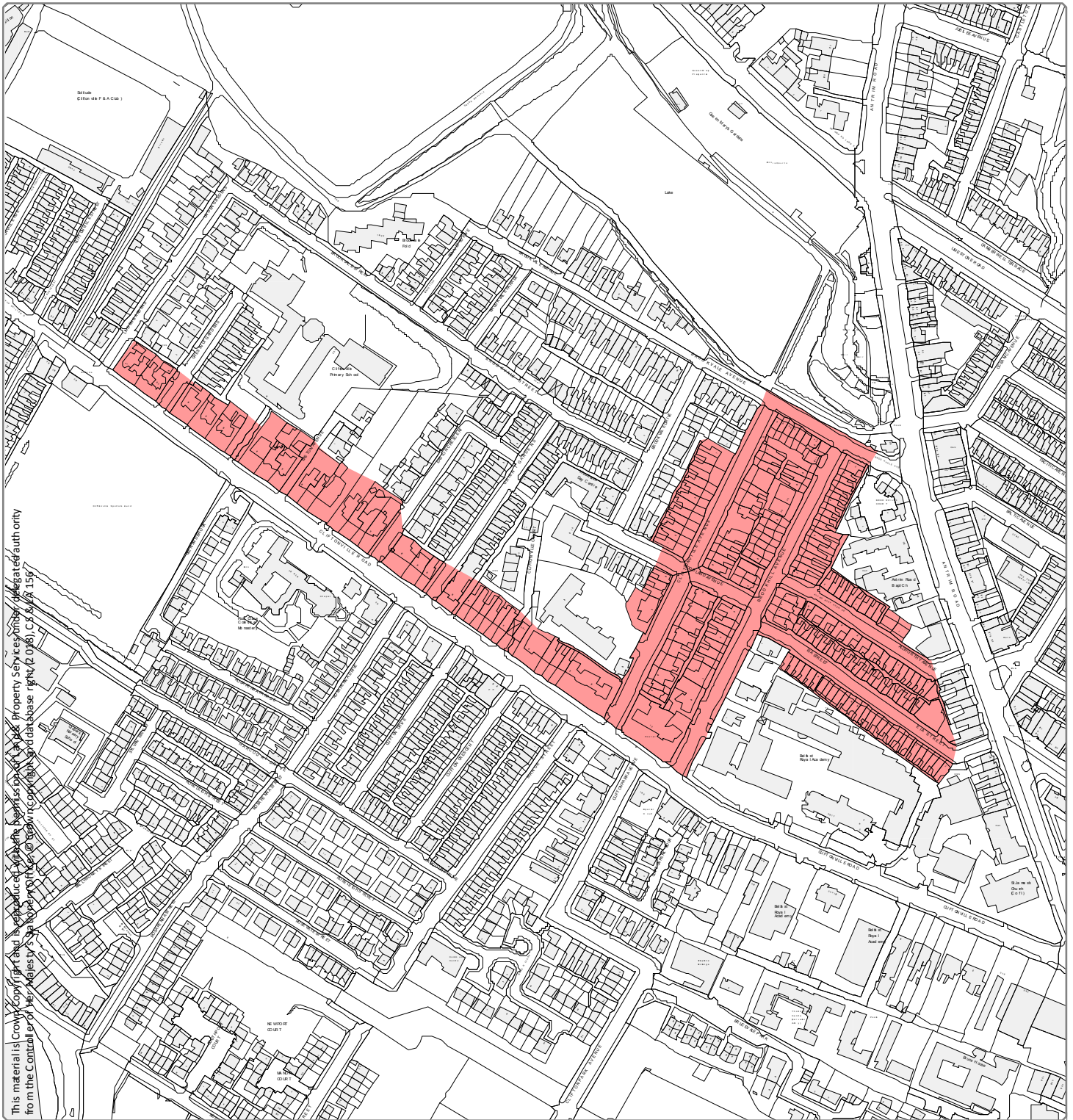
This material is Crown Copyright and is reproduced with the permission of Land & Property Services under delegated authority from the Controller of Her Majesty's Stationery Office, © Crown copyright and database right, (P.018), CS & LA. 156

**Designation Ref:** HMO 2/05  
**Location:** CAVEHILL

Source: Draft Belfast Metropolitan Area Plan 2015 in its most advanced stage prior to formal adoption  
 Note: Only the above Designation Ref is shown on this map

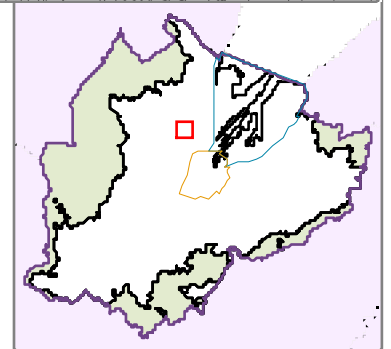
Scale 1:2,000 





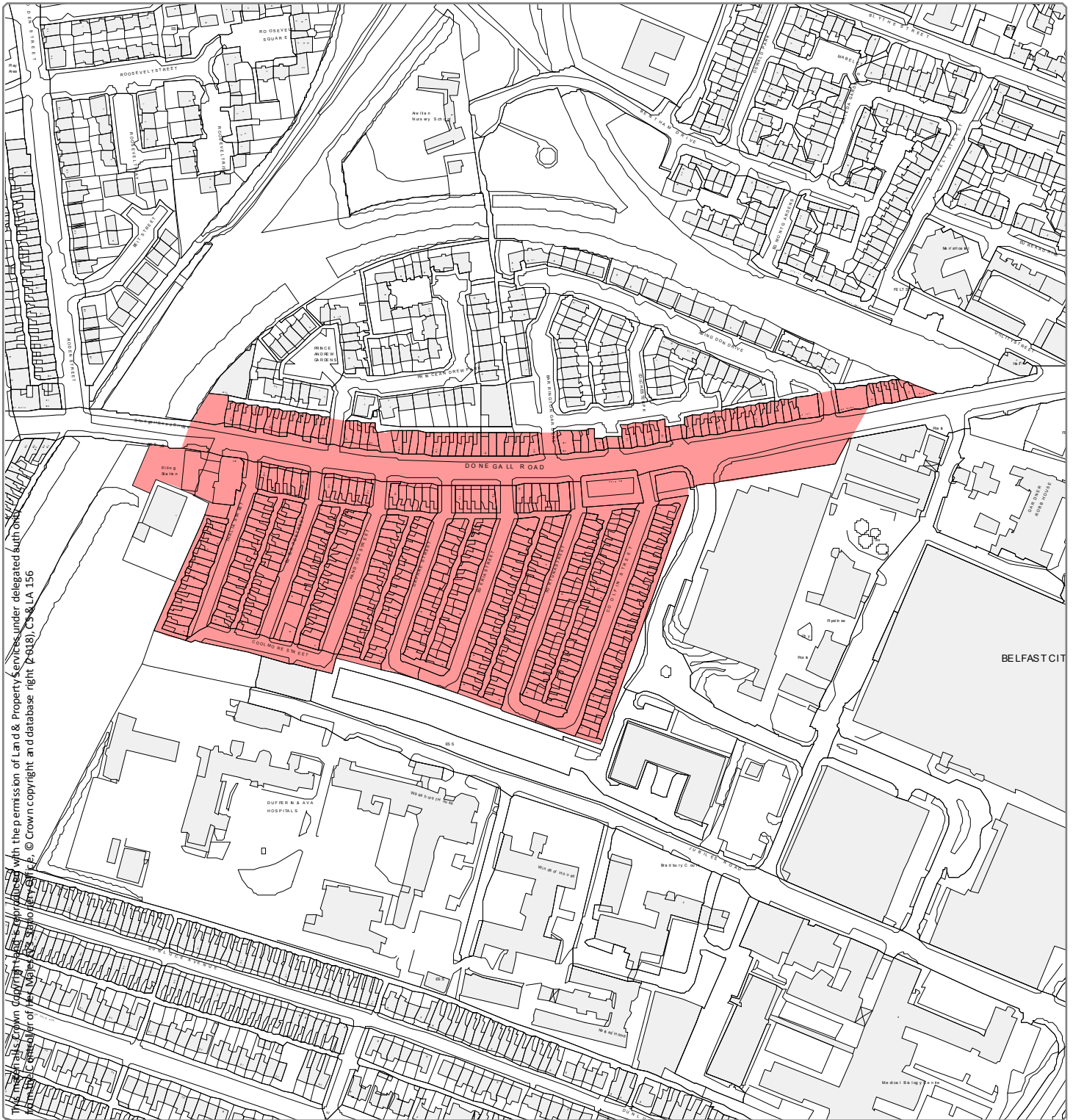
This material is Crown Copyright and is reproduced with the permission of Her Majesty's Stationery Office under license from the Controller of Her Majesty's Stationery Office. Ordnance Survey (OS) is the author of the data base rights (2016), OS E & N 156

**Designation Ref:** HMO 2/06  
**Location:** CLIFTONVILLE



Source: Draft Belfast Metropolitan Area Plan 2015 in its most advanced stage prior to formal adoption  
Note: Only the above Designation Ref is shown on this map

Scale 1:4,000

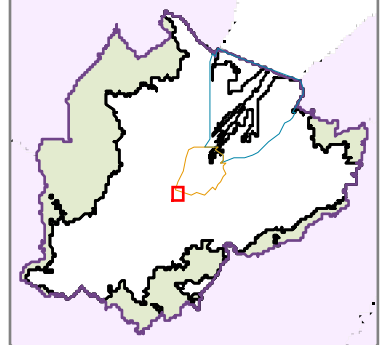


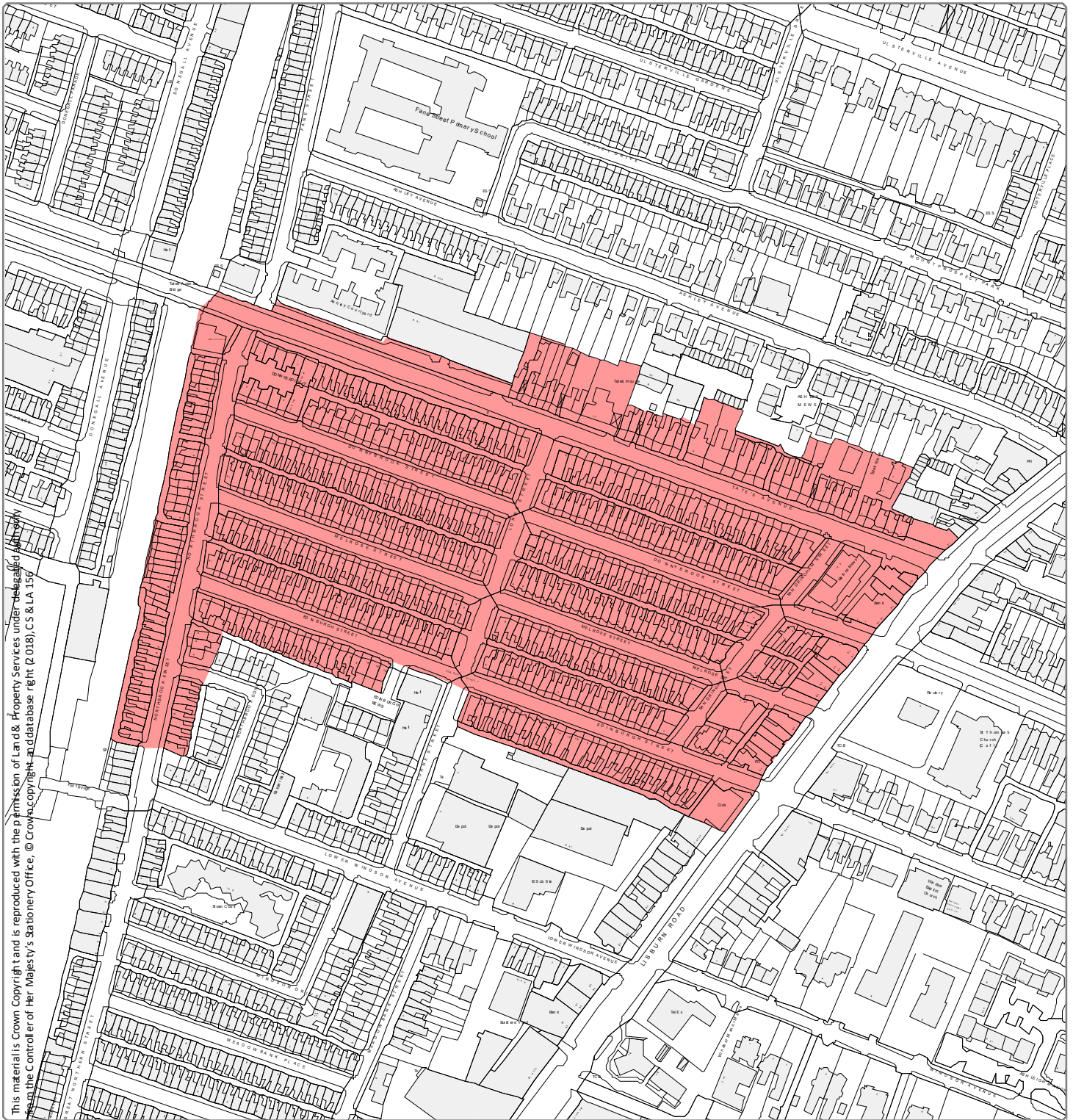
This map is published with the permission of Land & Property Services under delegated authority on behalf of the Belfast City Council. © Crown copyright and database right (2018), CS & LA 156

**Designation Ref:** HMO 2/07  
**Location:** DONEGALL ROAD

Source: Draft Belfast Metropolitan Area Plan 2015 in its most advanced stage prior to formal adoption  
 Note: Only the above Designation Ref is shown on this map

Scale 1:3,000

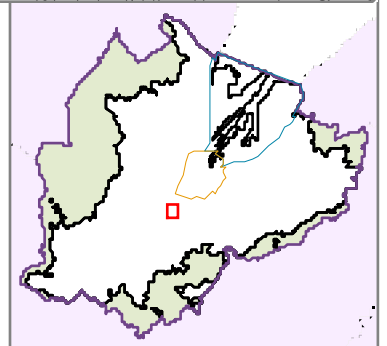




This material is Crown Copyright and is reproduced with the permission of Land & Property Services under delegated authority from the Controller of Her Majesty's Stationery Office, © Crown Copyright in a database right (P.018), CS & LA 159

**Designation Ref:** HMO 2/08  
**Location:** EDINBURGH STREET

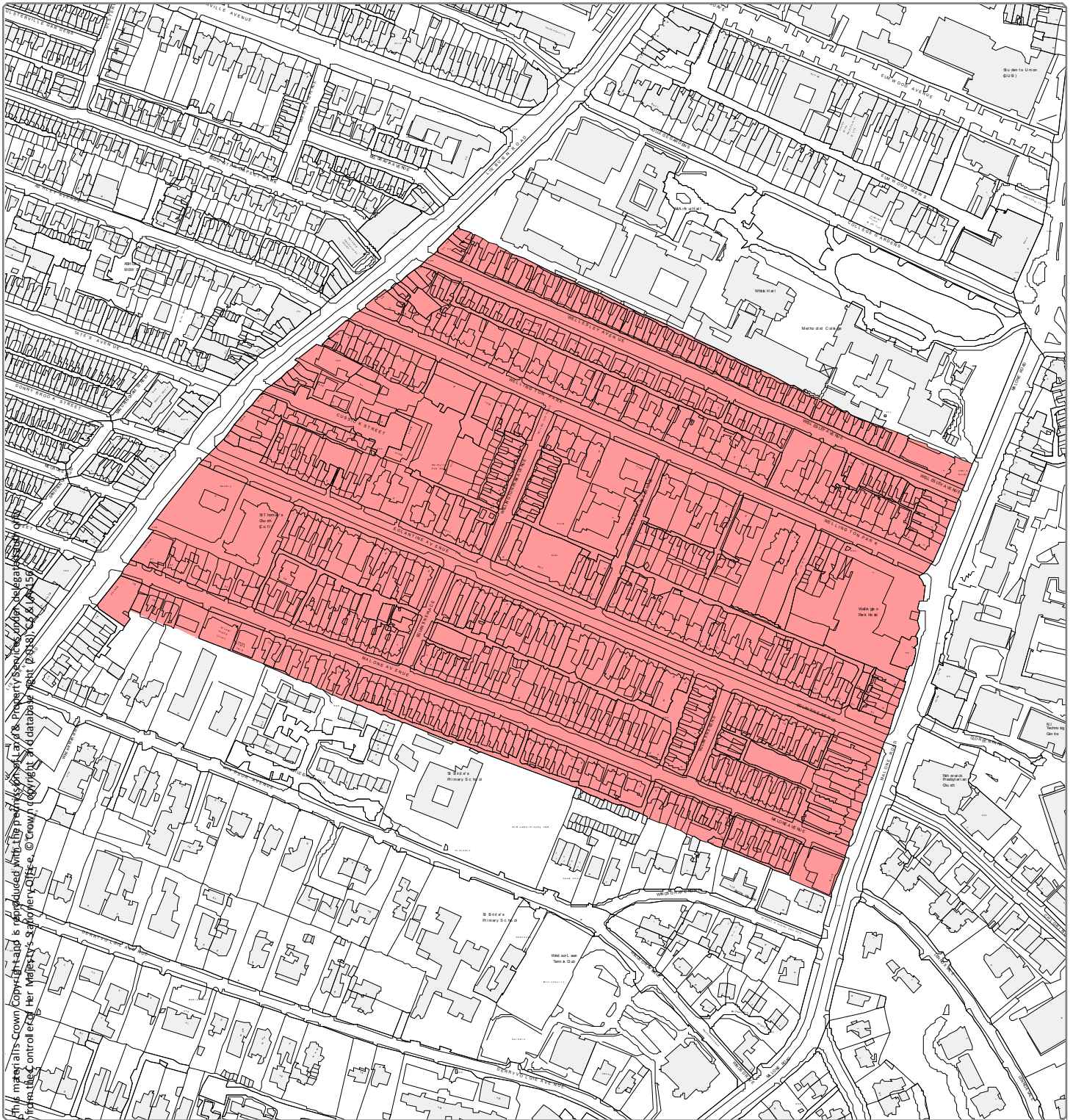
Source: Draft Belfast Metropolitan Area Plan 2015 in its most advanced stage prior to formal adoption  
Note: Only the above Designation Ref is shown on this map



Scale 1:3,000



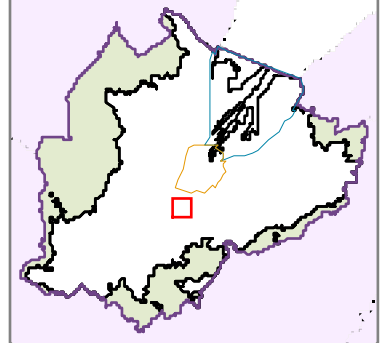


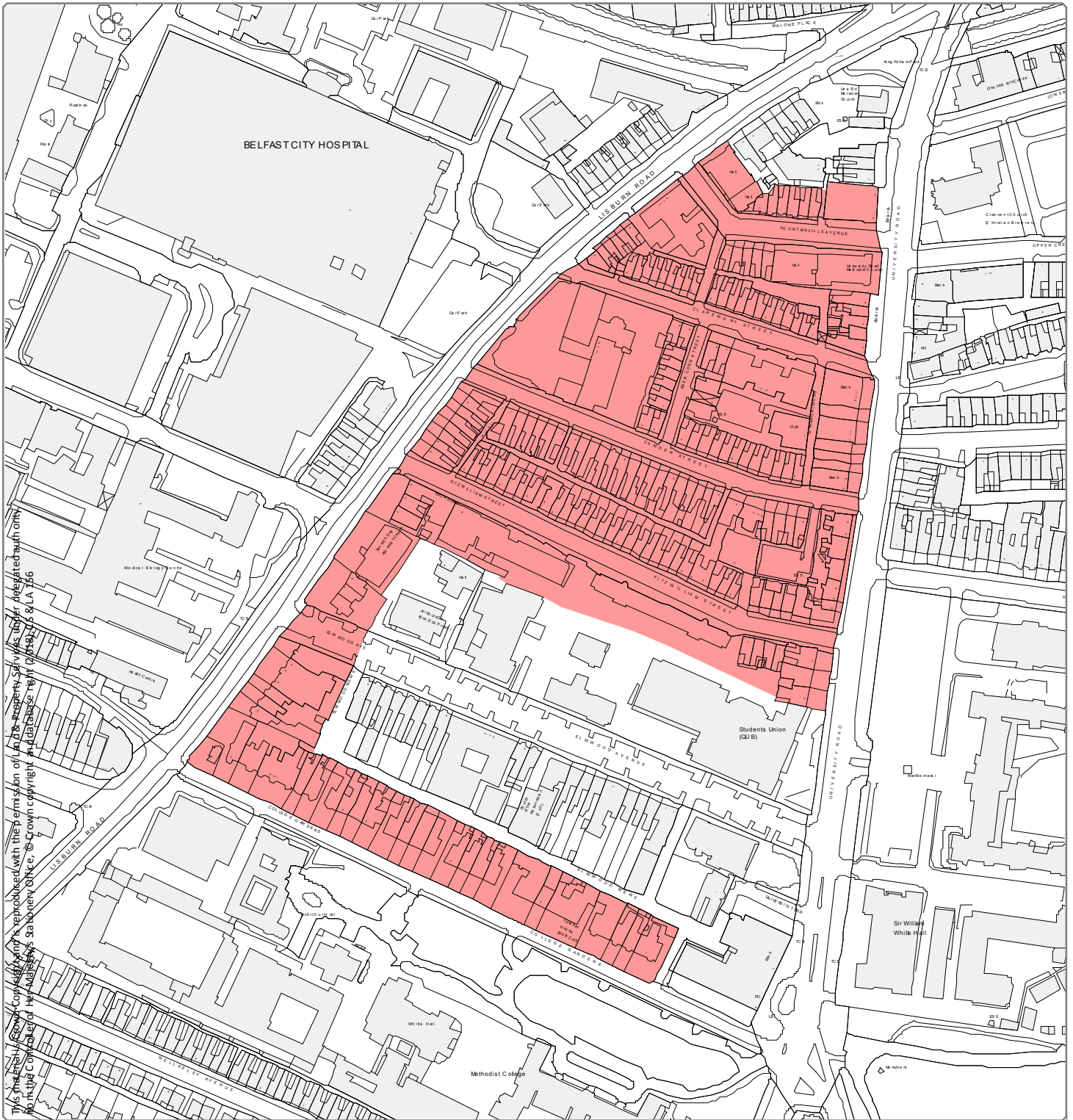


**Designation Ref:** HMO 2/09  
**Location:** EGLANTINE

Source: Draft Belfast Metropolitan Area Plan 2015 in its most advanced stage prior to formal adoption  
 Note: Only the above Designation Ref is shown on this map

Scale 1:4,000

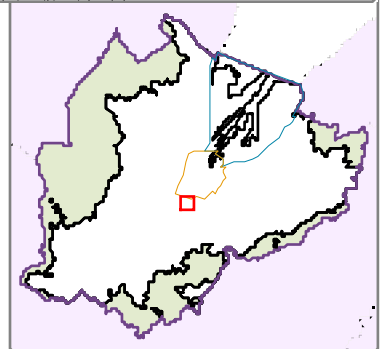


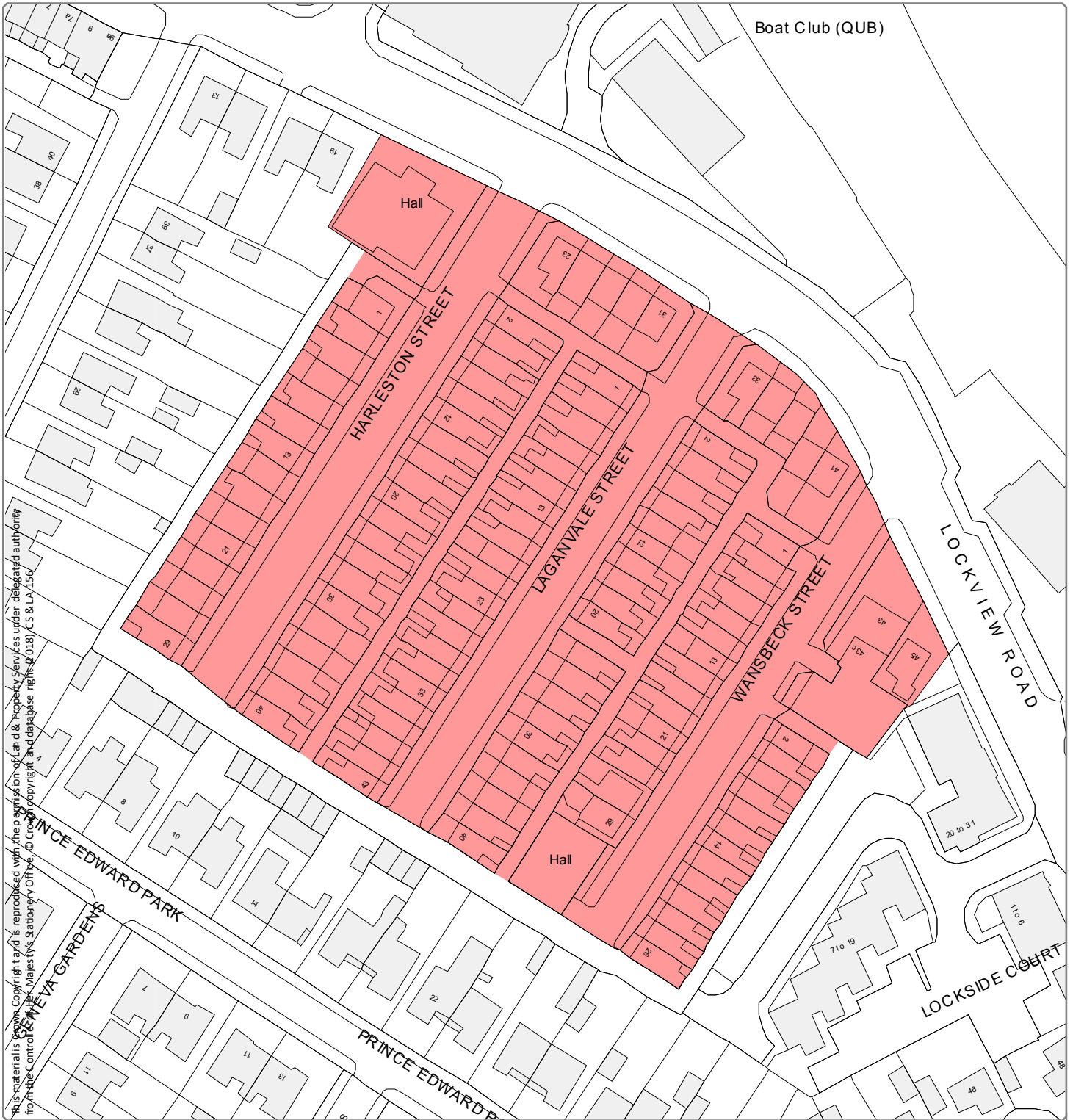


**Designation Ref:** HMO 2/10  
**Location:** FITZWILLIAM

Source: Draft Belfast Metropolitan Area Plan 2015 in its most advanced stage prior to formal adoption  
Note: Only the above Designation Ref is shown on this map

Scale 1:3,000

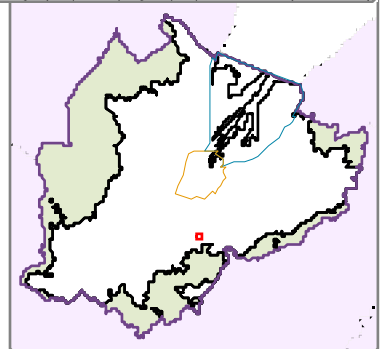


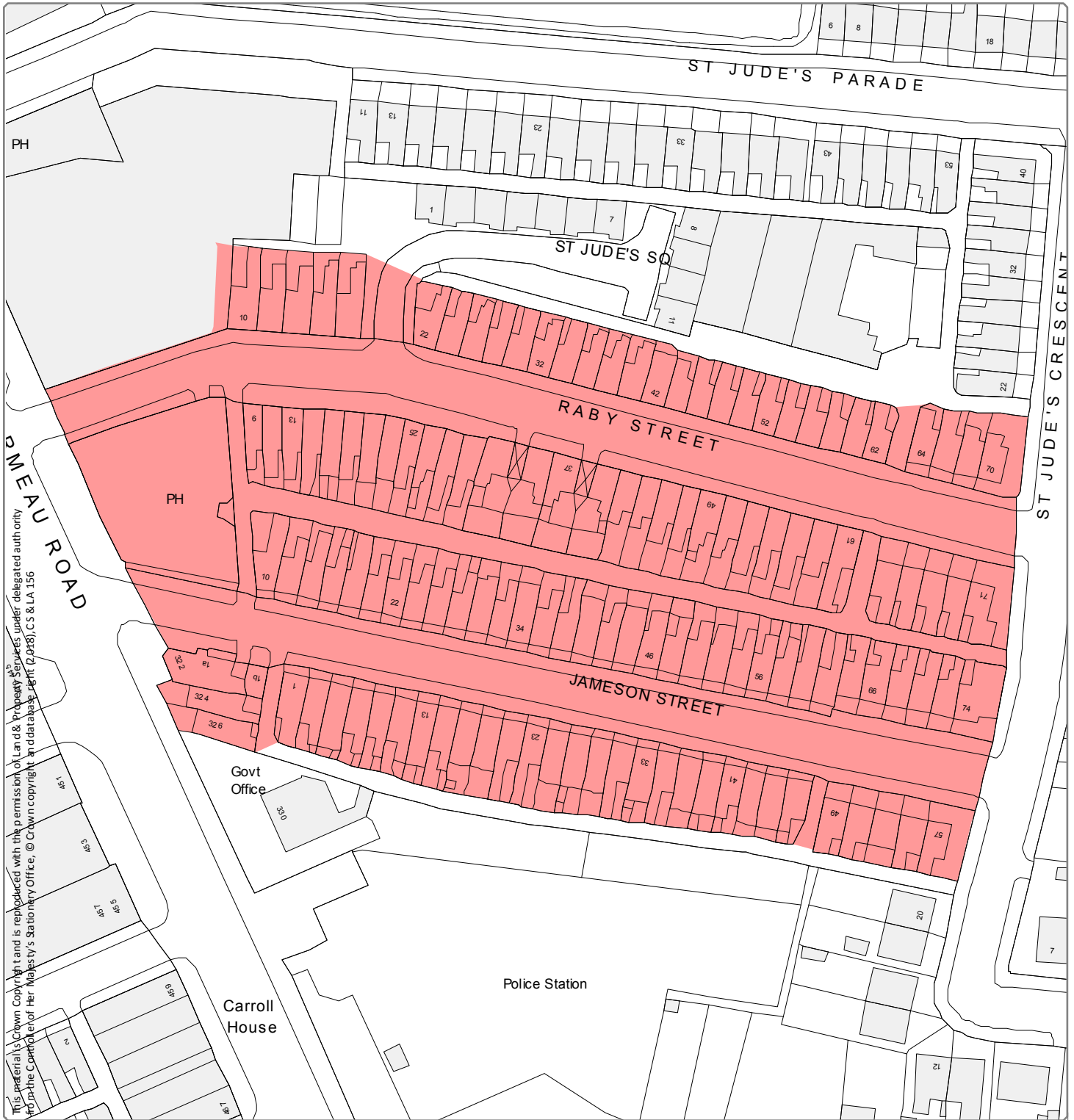


**Designation Ref:** HMO 2/11  
**Location:** HARLESTON

Source: Draft Belfast Metropolitan Area Plan 2015 in its most advanced stage prior to formal adoption  
 Note: Only the above Designation Ref is shown on this map

Scale 1:1,000





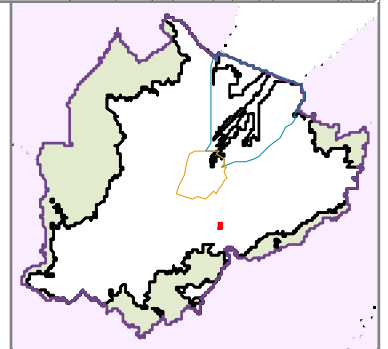
**Designation Ref:** HMO 2/12

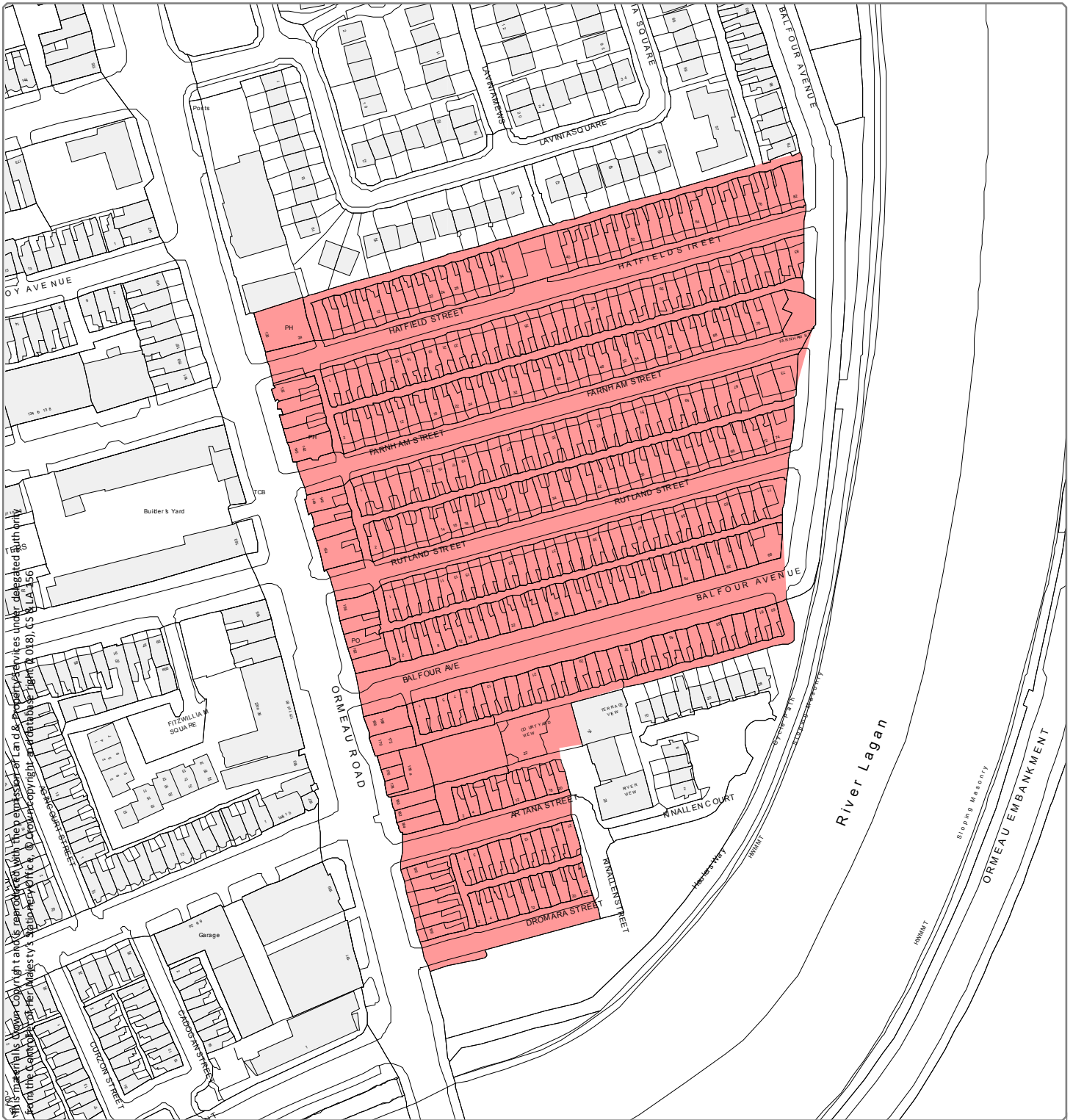
**Location:** JAMESON

Source: Draft Belfast Metropolitan Area Plan 2015 in its most advanced stage prior to formal adoption

Note: Only the above Designation Ref is shown on this map

Scale 1:1,000

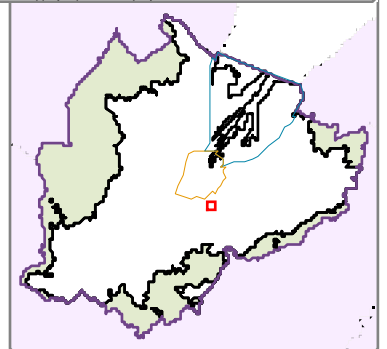


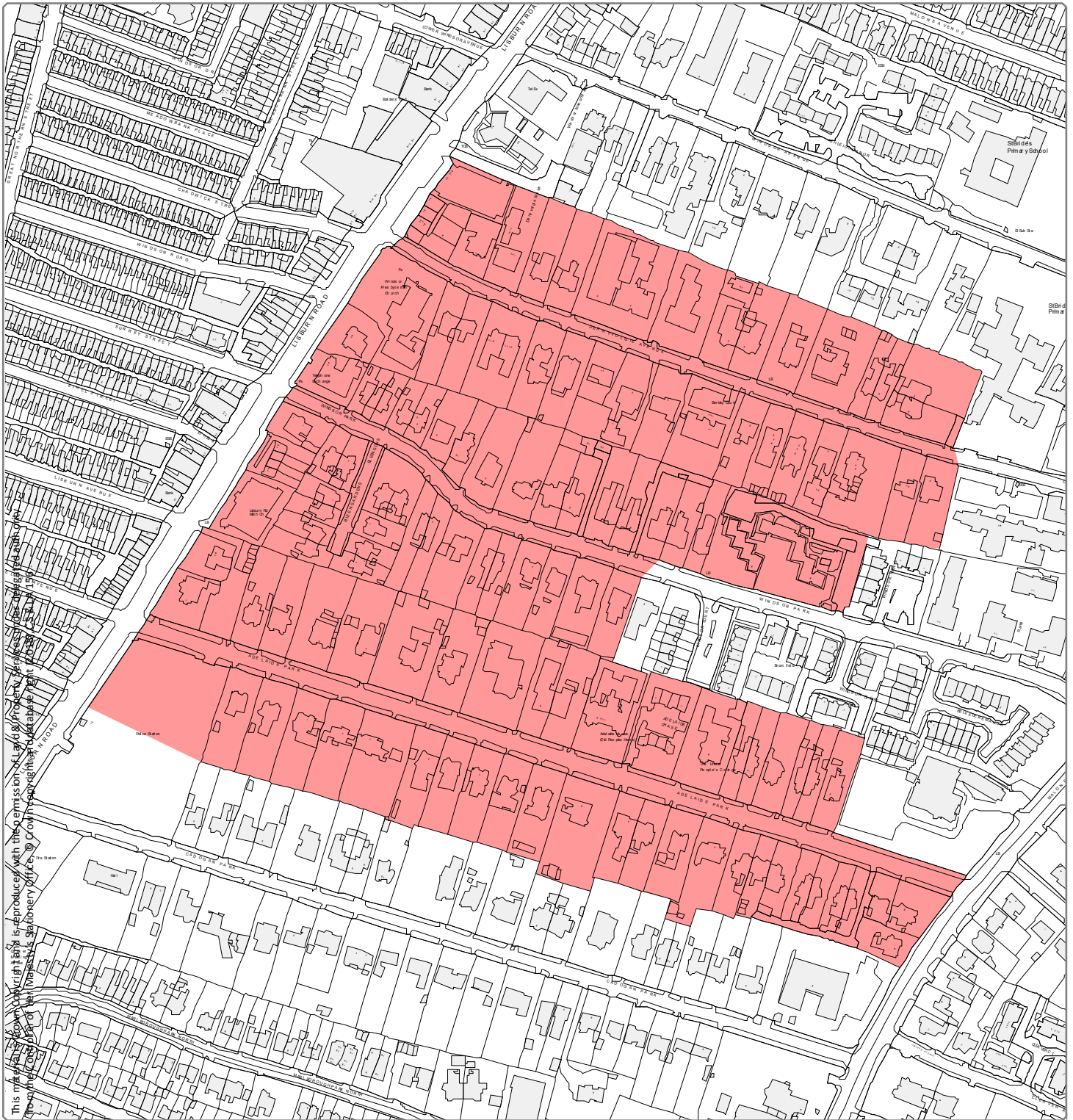


**Designation Ref:** HMO 2/13  
**Location:** LOWER ORMEAU

Source: Draft Belfast Metropolitan Area Plan 2015 in its most advanced stage prior to formal adoption  
 Note: Only the above Designation Ref is shown on this map

Scale 1:2,000





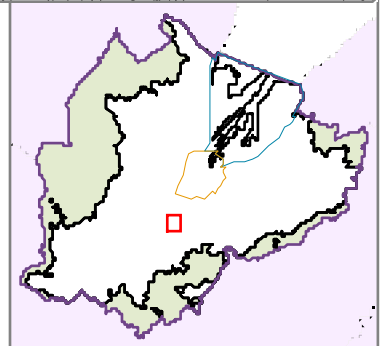
**Designation Ref:** HMO 2/14

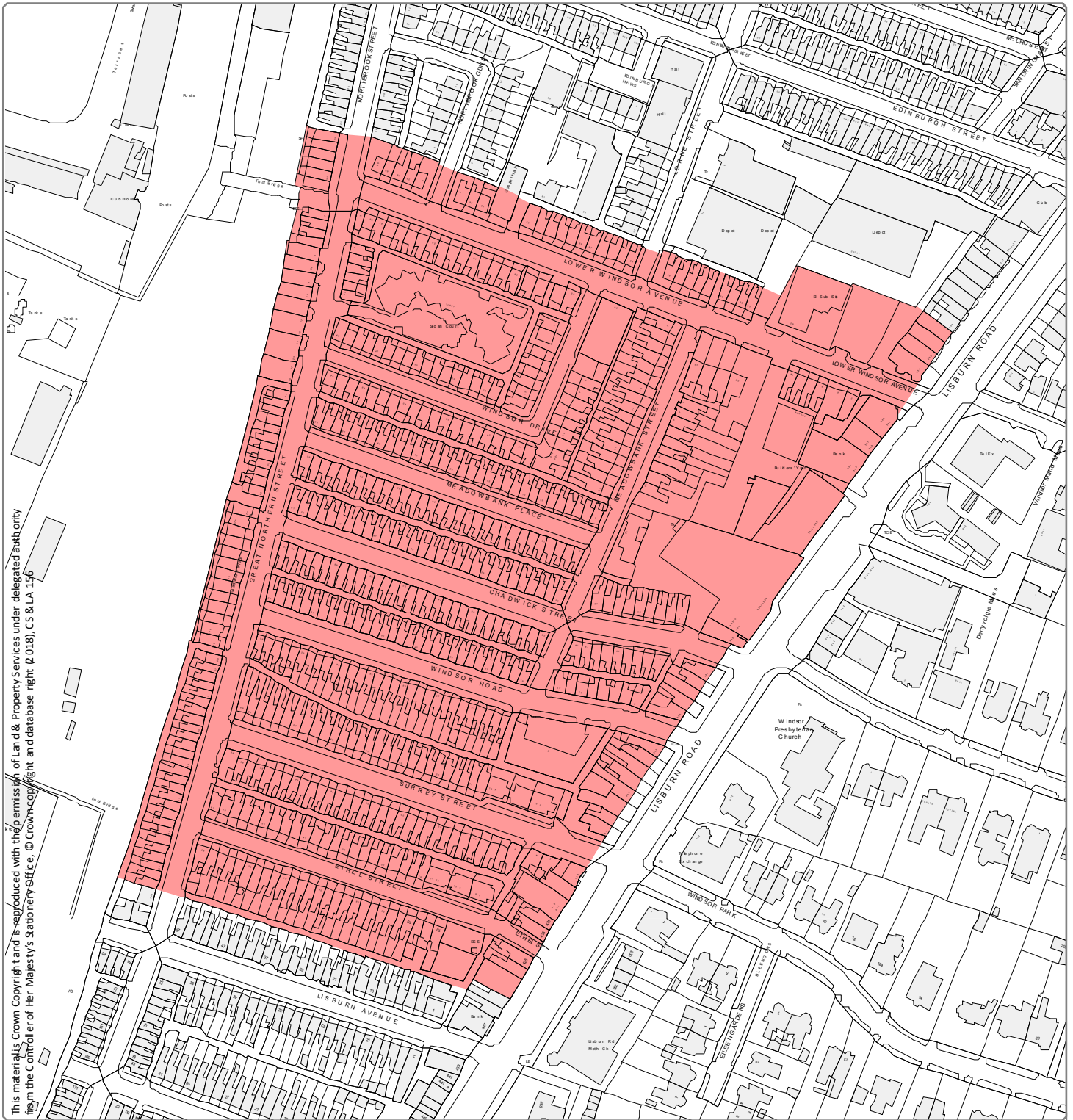
**Location:** MALONE

Source: Draft Belfast Metropolitan Area Plan 2015 in its most advanced stage prior to formal adoption

Note: Only the above Designation Ref is shown on this map

Scale 1:3,500



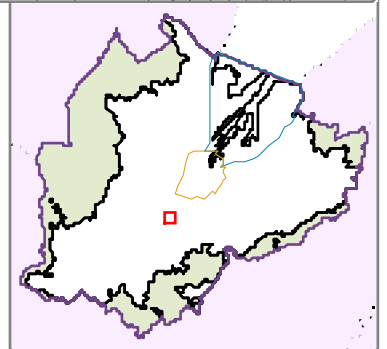


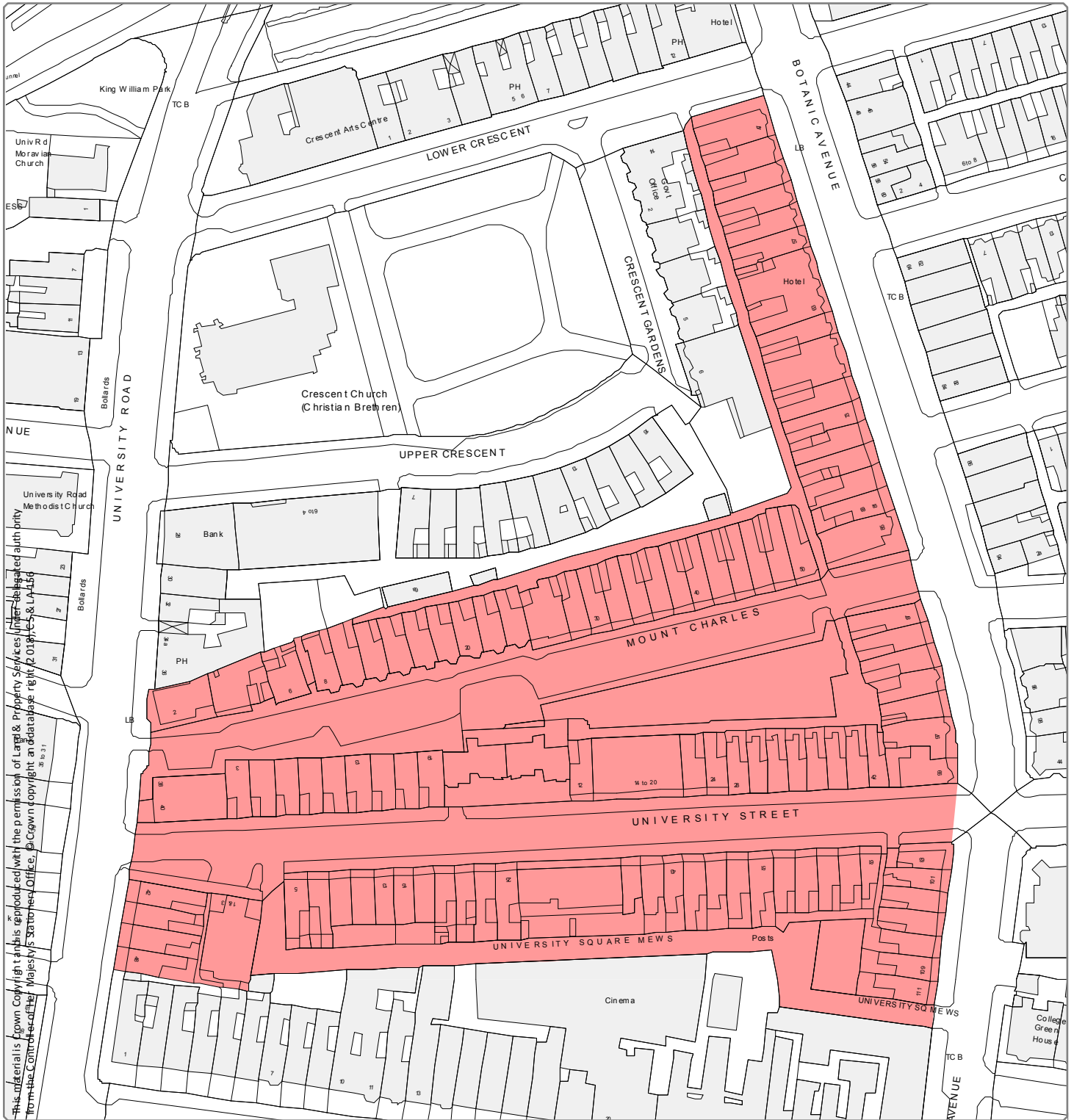
This material is Crown Copyright and is reproduced with the permission of Land & Property Services under delegated authority from the Controller of Her Majesty's Stationery Office, © Crown Copyright and database right, © 018, CS & LA 156

**Designation Ref:** HMO 2/15  
**Location:** MEADOWBANK

Source: Draft Belfast Metropolitan Area Plan 2015 in its most advanced stage prior to formal adoption  
 Note: Only the above Designation Ref is shown on this map

Scale 1:2,500

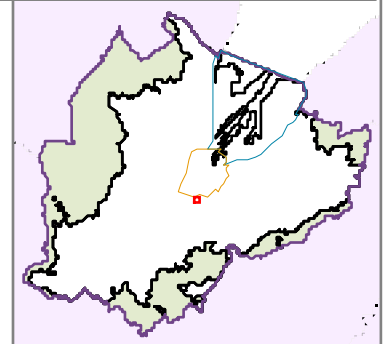




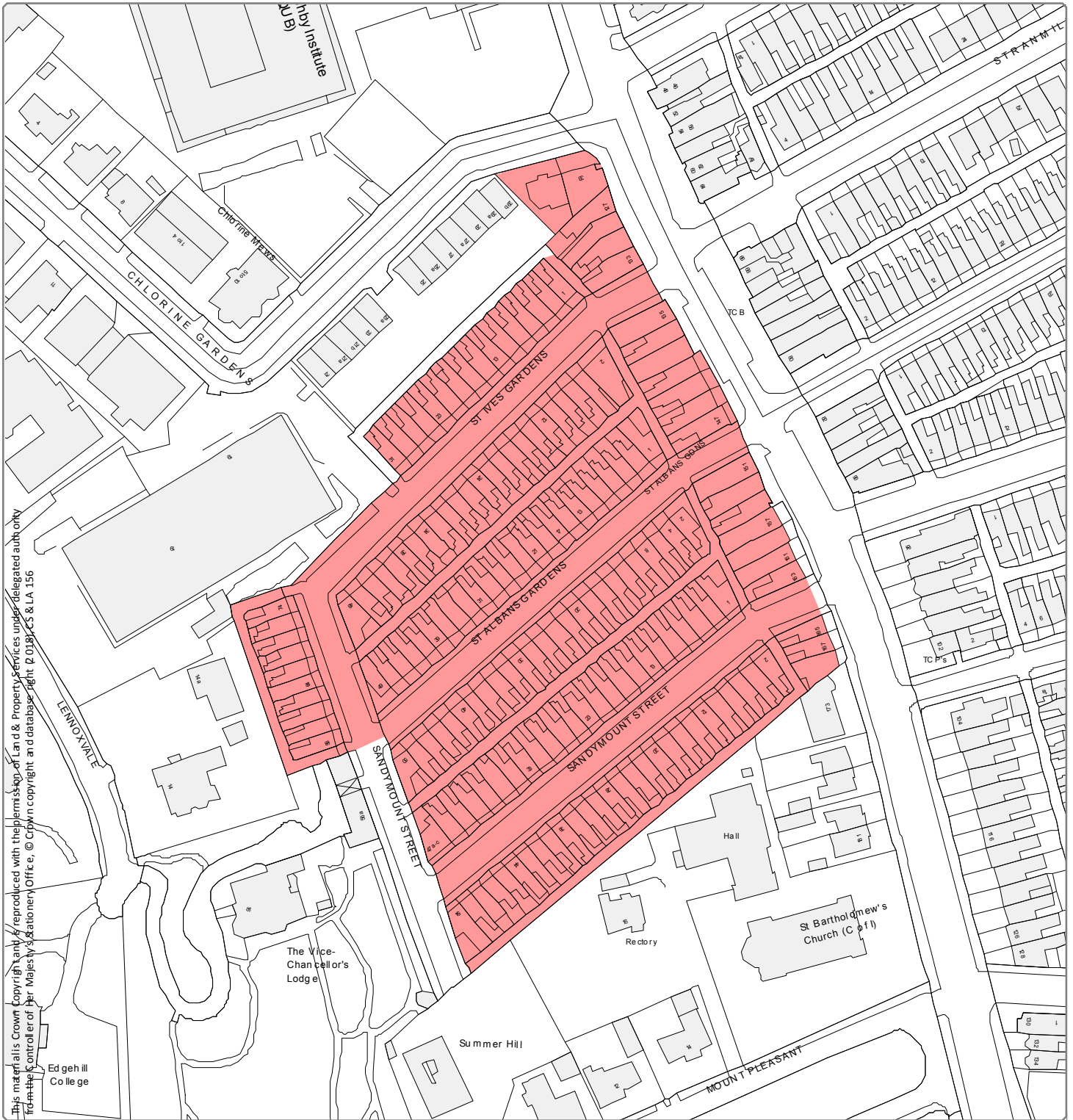
**Designation Ref:** HMO 2/16  
**Location:** MOUNT CHARLES

Source: Draft Belfast Metropolitan Area Plan 2015 in its most advanced stage prior to formal adoption  
 Note: Only the above Designation Ref is shown on this map

Scale 1:1,500



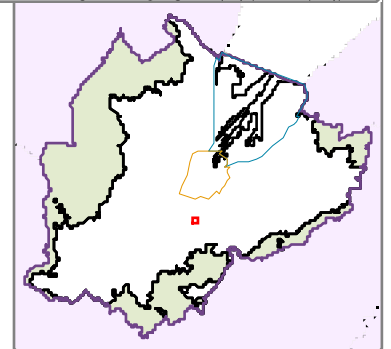


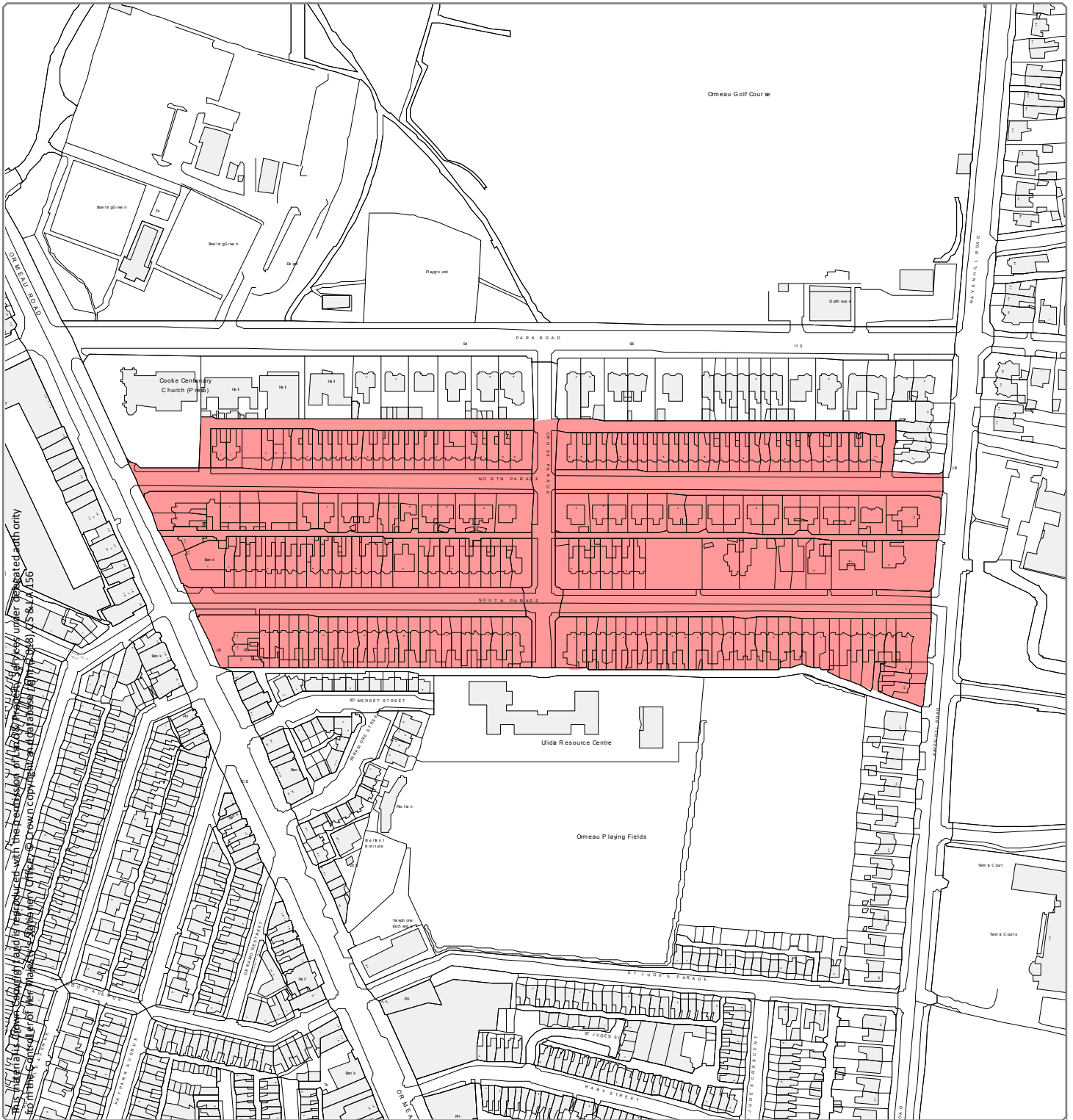


**Designation Ref:** HMO 2/17  
**Location:** SANDYMOUNT

Source: Draft Belfast Metropolitan Area Plan 2015 in its most advanced stage prior to formal adoption  
 Note: Only the above Designation Ref is shown on this map

Scale 1:1,500

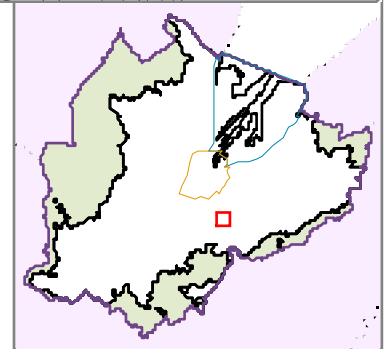


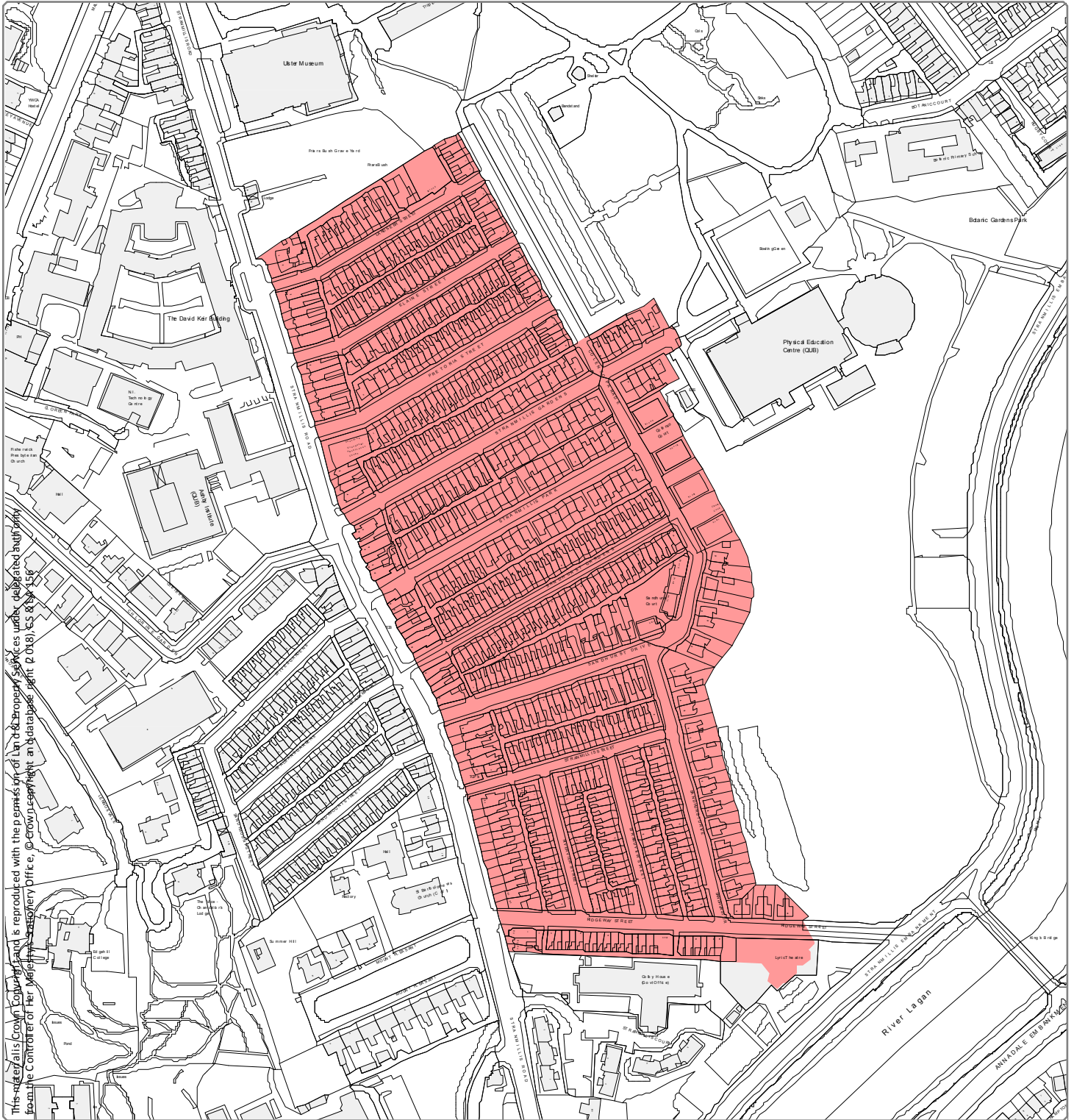


**Designation Ref:** HMO 2/18  
**Location:** SOUTH PARADE

Source: Draft Belfast Metropolitan Area Plan 2015 in its most advanced stage prior to formal adoption  
 Note: Only the above Designation Ref is shown on this map

Scale 1:3,000

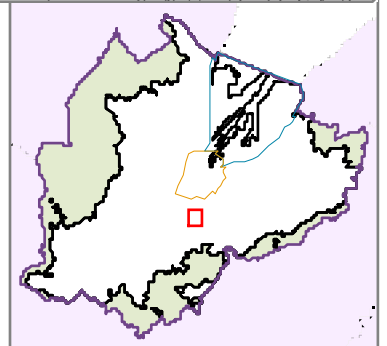


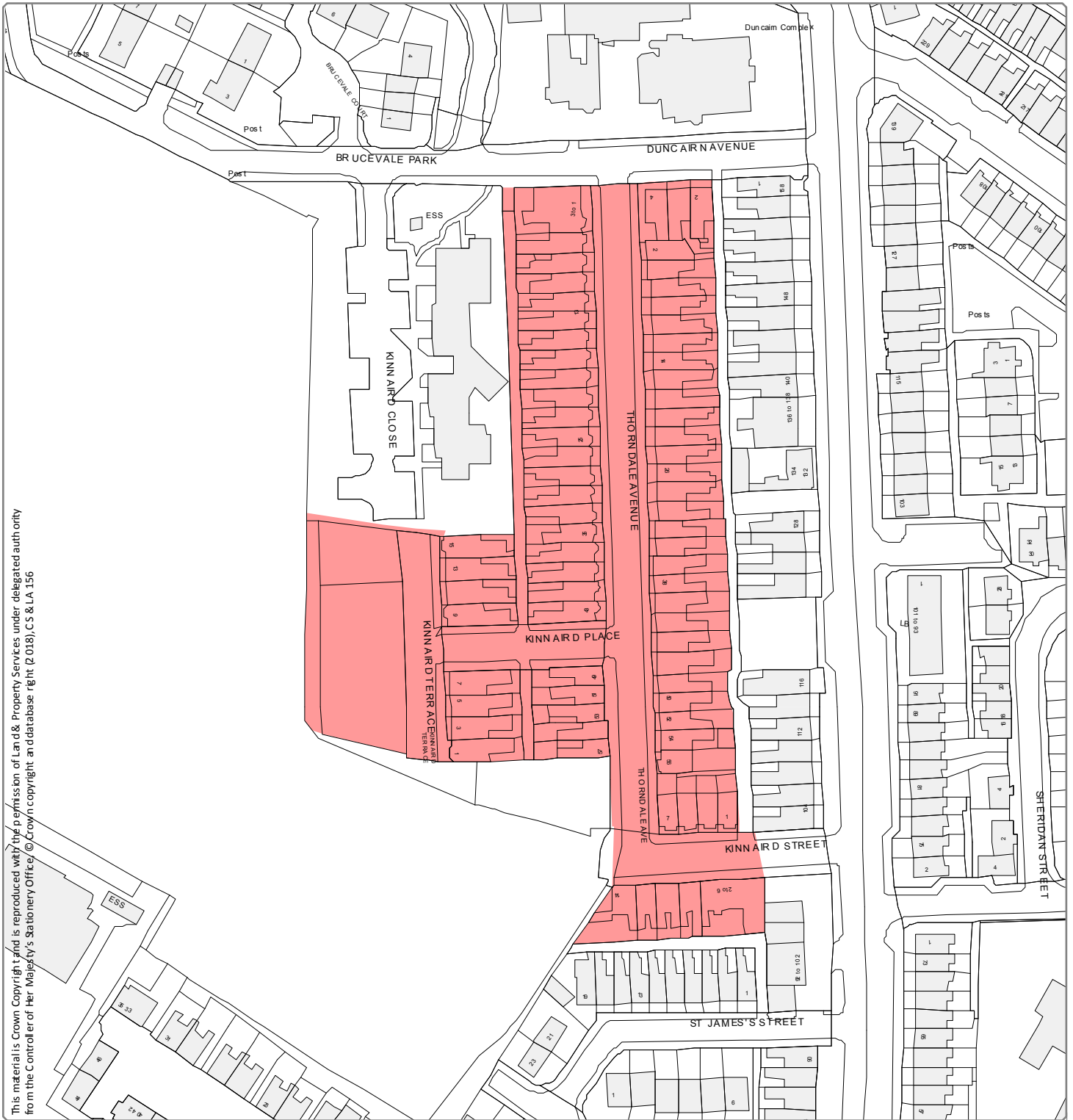


**Designation Ref:** HMO 2/19  
**Location:** STRANMILLIS

Source: Draft Belfast Metropolitan Area Plan 2015 in its most advanced stage prior to formal adoption  
 Note: Only the above Designation Ref is shown on this map

Scale 1:3,500





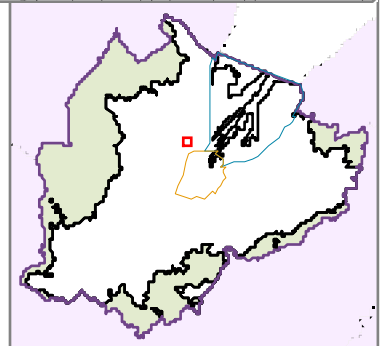
This material is Crown Copyright and is reproduced with the permission of Land & Property Services under delegated authority from the Controller of Her Majesty's Stationery Office. © Crown copyright and database right (2018), CS & LA 156

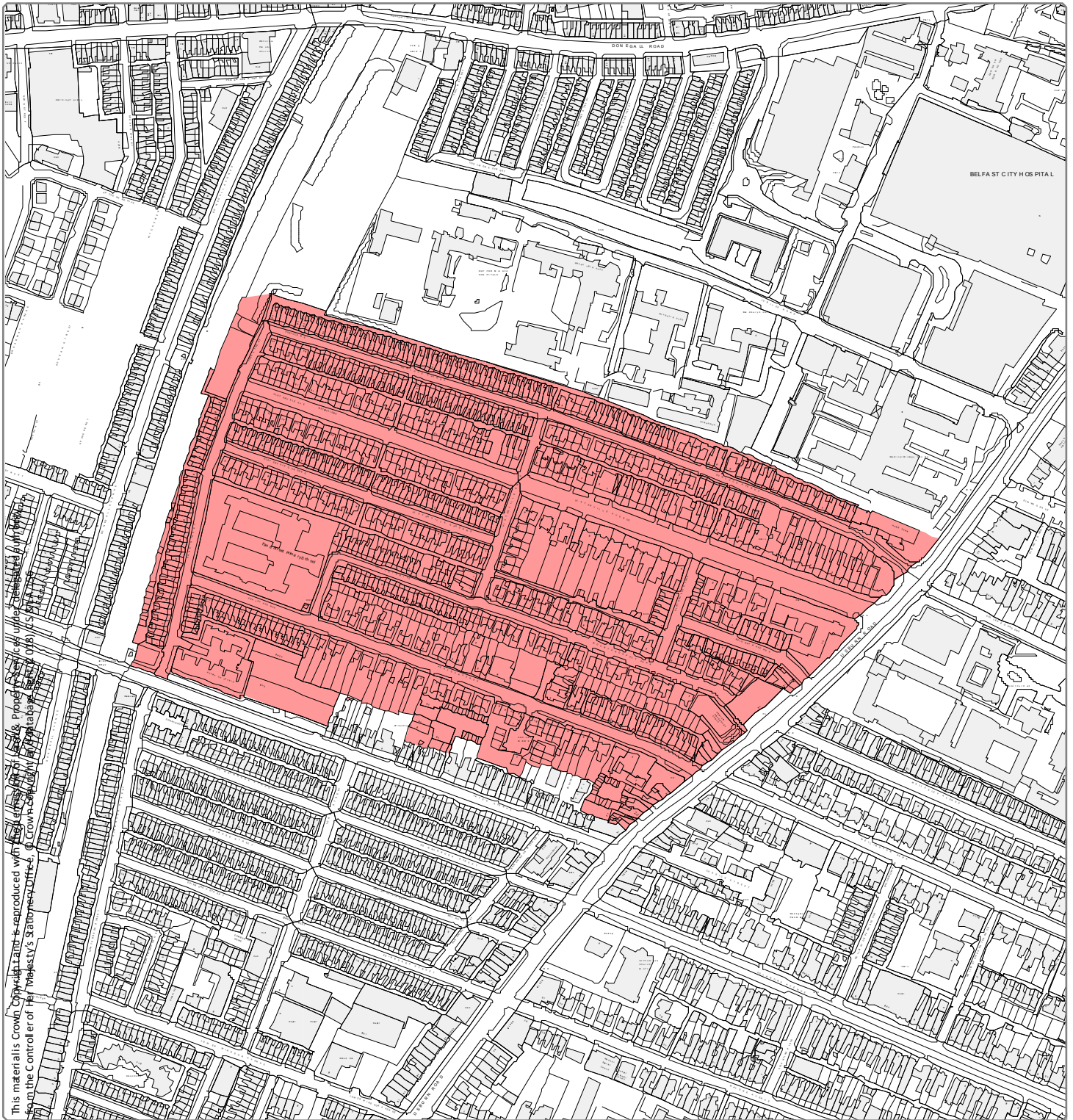
**Designation Ref:** HMO 2/20  
**Location:** THORNDALE

Source: Draft Belfast Metropolitan Area Plan 2015 in its most advanced stage prior to formal adoption

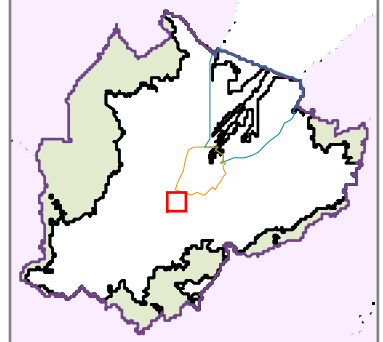
Note: Only the above Designation Ref is shown on this map

Scale 1:1,500




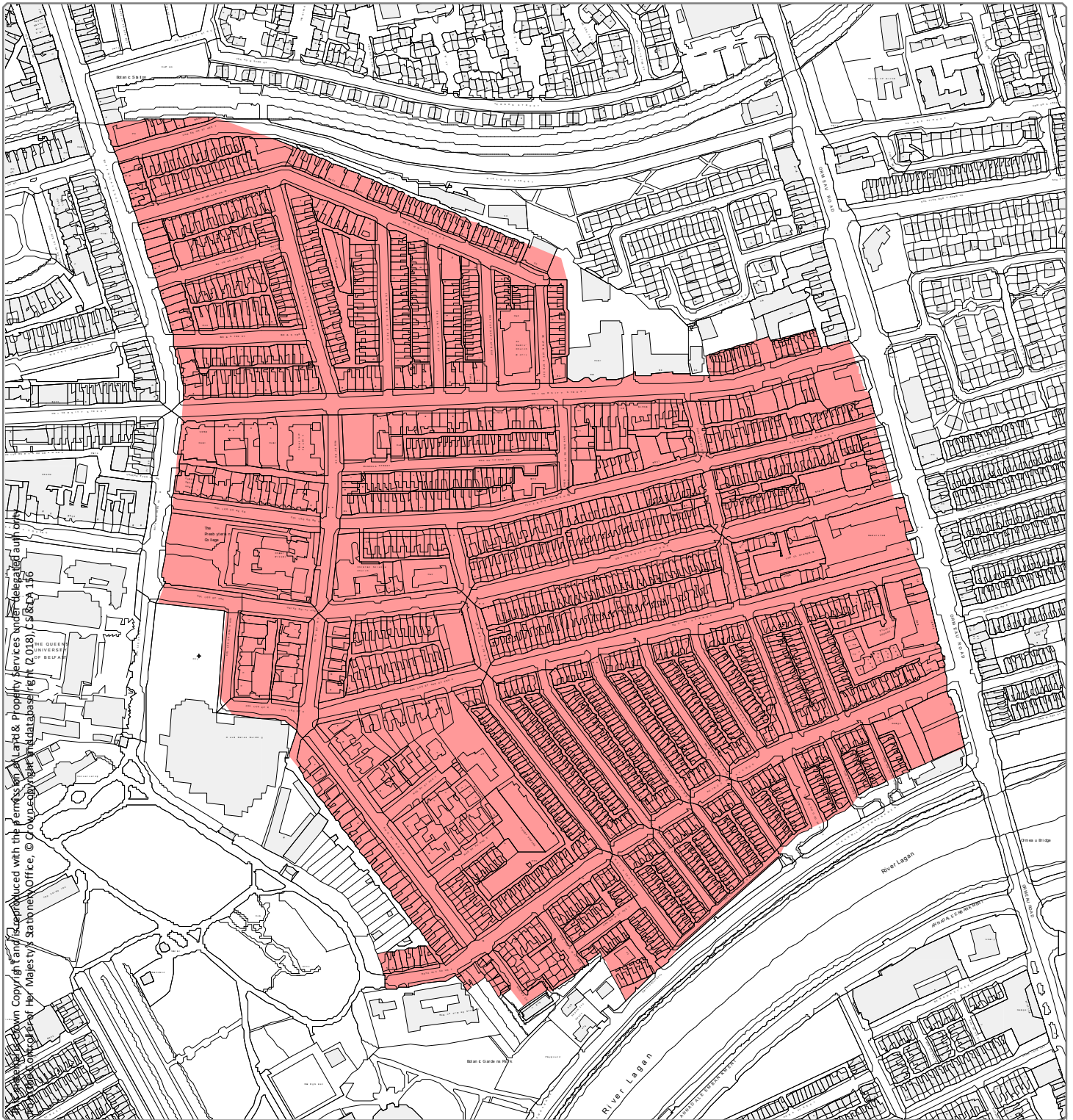


**Designation Ref:** HMO 2/21  
**Location:** ULSTERVILLE



Source: Draft Belfast Metropolitan Area Plan 2015 in its most advanced stage prior to formal adoption  
 Note: Only the above Designation Ref is shown on this map

Scale 1:4,500 



**Designation Ref:** HMO 2/22  
**Location:** BOTANIC, HOLYLANDS, RUGBY

Source: Draft Belfast Metropolitan Area Plan 2015 in its most advanced stage prior to formal adoption  
Note: Only the above Designation Ref is shown on this map

Scale 1:4,500

